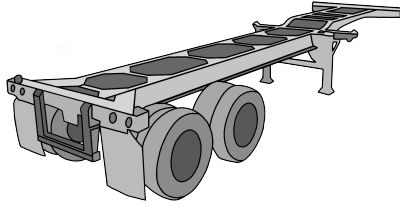
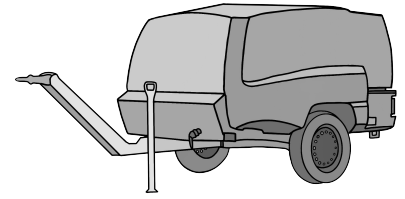


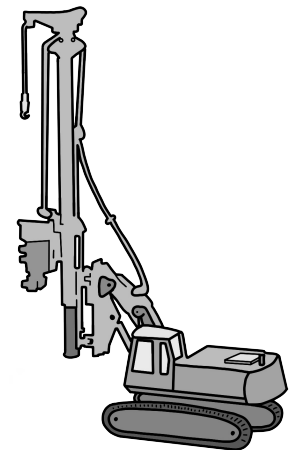
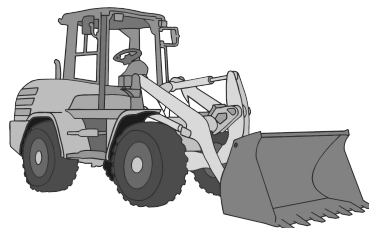
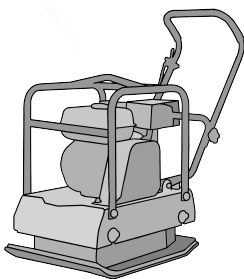
EQTrace click - LTE-GPS-Tracker



Chassis
Container
Material
Vibratory Plates



Compressors
Attachment
Ram



Theft Protection, Position, Usage time

- Current position for optimized transport and service
- Daily transmission of position* / Usage time
- Fastening in seconds by "click" (permanent magnet)
- Anti-theft protection for work area, relaxation area, times of day
- Internal battery supply.

Installed in seconds.

* If mobile telephony is possible there.

Data collected:

With daily reporting

- Usage time
- Actual position
- Start of work
- End of work

In case of theft

- Position reports in the set alarm interval

Theft protection and service:

- Theft protection (geofence (work area), quiet area monitoring, time of day)
- Service intervals (TÜV, operating hours, UVV)
- Service log book (circuit diagrams, service instructions, damage photos)

Technical Data:

Operating voltage: Supply via built-in battery

Inputs: 1 virtuel

Protection: IP68

Temperature range: -20°C - +70°C

Housing dimensions: L*B*H (mm) = 112 * 68 * 19,2

Transfer procedure: LTE in germany with national Roaming (D1/D2/O2)

Do you have any questions? Call us, we are happy to help.



Rösler Software-Technik GmbH, Steinheide 36, 28857 Syke-Heiligenfelde, Germany

Tel: +49 (0) 421 80 22 70-0, Fax +49 (0)421 4899399-96, www.miniDaT.de, email: info@miniDaT.de