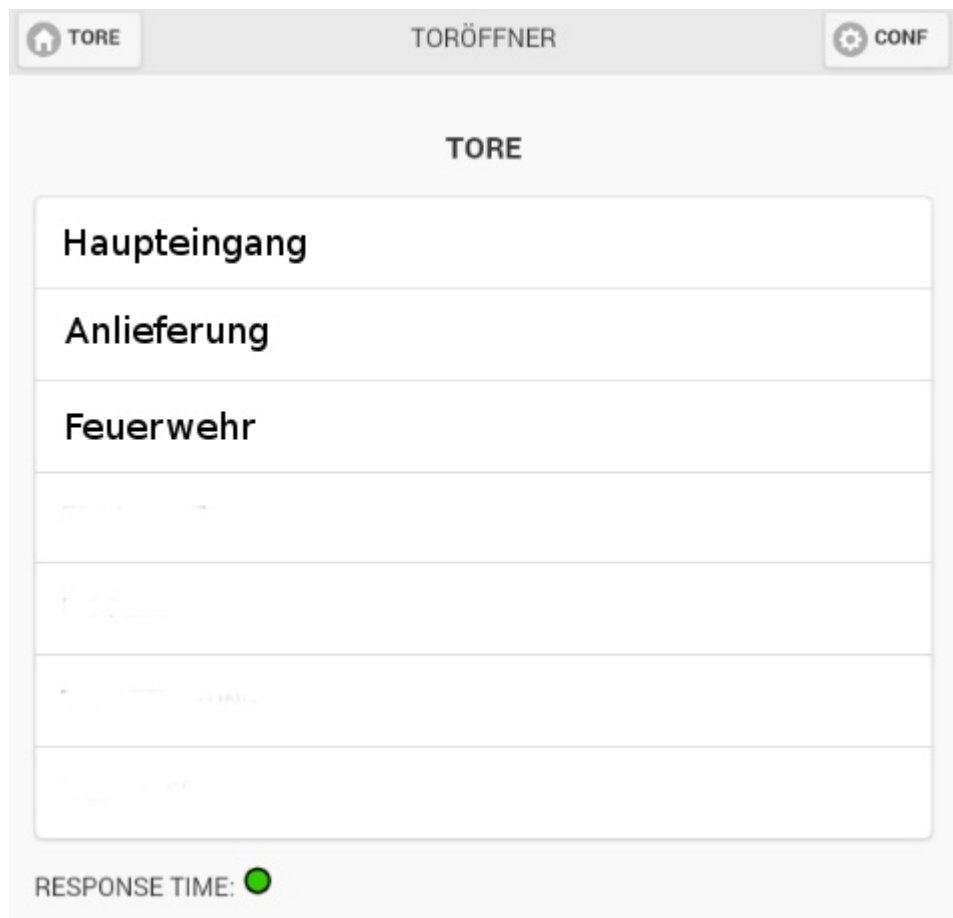


Door opener



Manual

Contents

1.	<u>Introduction</u>	3
2.	<u>Registration/Login</u>	3
3.	<u>Doors</u>	4
4.	<u>Settings</u>	5
4.1.	<u>Autologin</u>	5
4.2.	<u>Language</u>	6
5.	<u>Logout</u>	6
6.	<u>Contact and Support</u>	7

**You can quickly go to a specific chapter
by clicking on it in the table of contents.**

1. Introduction

Dear user,

this document is a manual for the "Door opener" app. This app can be used to open and close doors with a click and to see their current status.

The following pages will explain step by step how the app works.

If you have any questions or problems, please do not hesitate to contact us.

The app is available for Android, iOS and Windows 10.

You can download the newest version from the Android, iOS or Windows mobile app store.

2. Registration/Login

Please contact us if you are interested in using the app. We will then provide your access details. Our contact details can be found on [page 7](#).

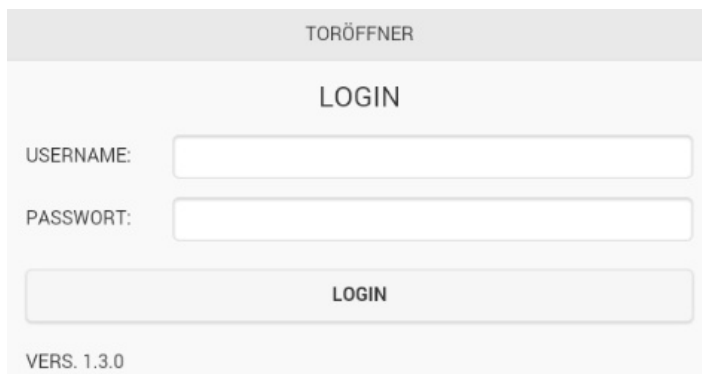
To login for the first time you need to first download the app e.g. from the Google Play Store.



Toröffner

Rösler Software-Technik

➤ Installiert



TORÖFFNER

LOGIN

USERNAME:

PASSWORT:

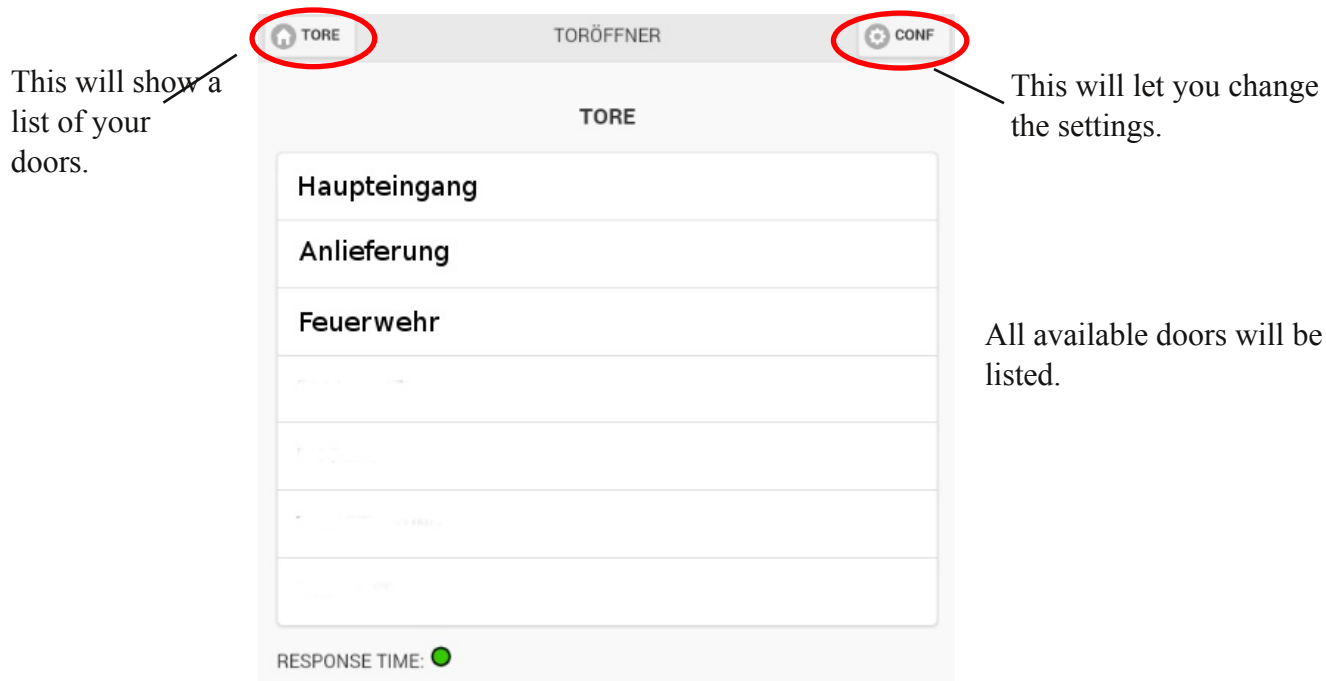
LOGIN

VERS. 1.3.0

When you have installed the app and received your access details you are ready to go. After opening the app you will see the login screen. Please enter your credentials and click on "Login".

3. Doors

After login the following screen will be shown:



On this page you can see your available doors as well as enter the settings. After login you will be automatically forwarded to this page.

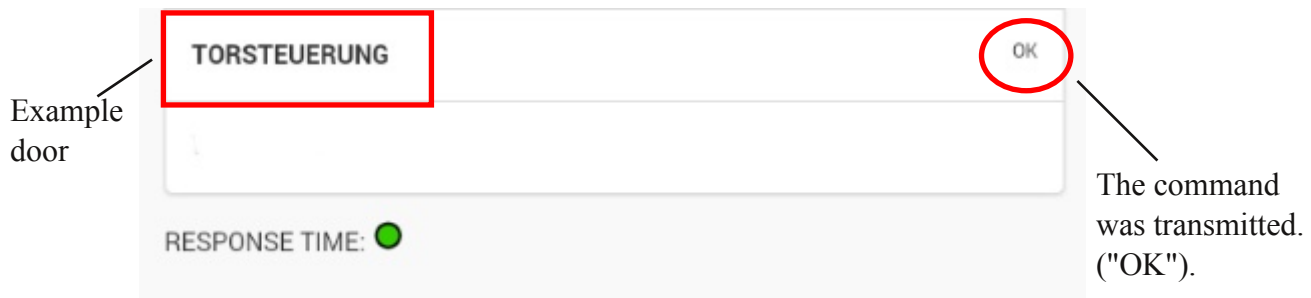
At the bottom of the page after "RESPONSE TIME" is a circle. This circle shows the result of a short connection test. Depending on the speed of the connection to the server it will be red, yellow or green.

- red means "bad"
- yellow means "mediocre"
- green means "excellent"



In the example the connection is green. ("Excellent").

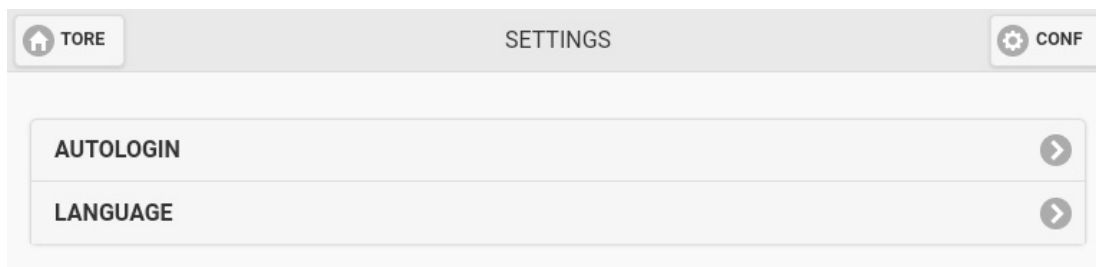
To open or close a door you have to click on the name of the door. First the message "Transmission..." will be displayed behind the name and replaced by "OK" when the command has been successfully transmitted to the door.



To see your doors in the app you need to buy an "EQTrace Gate" for each door. This device will be integrated into the control unit of the door so that the opening and closing of the door can be remotely controlled via the app. When the device has been integrated the door will be linked to your customer account and will then be visible in the app. All your doors can be accessed with the same account. The name of the door will initially be the device number. However, we can change the name for you if desired.

4. Settings

The following window will be displayed when clicking on the button "CONF".

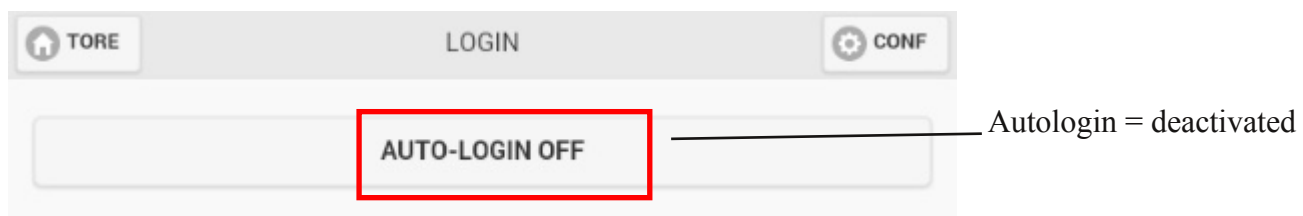


In the settings you can configure whether you want to be automatically logged in when opening the app as well as the language of the app.

4.1. Autologin

To activate or deactivate the autologin you have to click on "Autologin".

Then the following window will appear:



Per default the autologin is set to "Off".

By clicking on "AUTO-LOGIN OFF" you can activate it.



When the autologin is activated you will be automatically logged in when opening the app.

4.2. Language

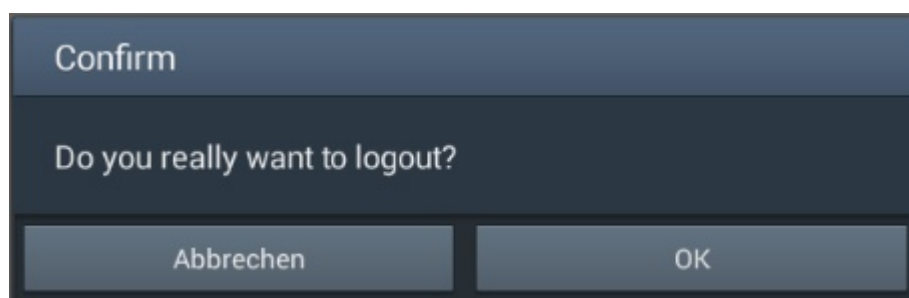
Under settings you can select the language of the app.
To change the language you need to click on "language".
The following page will appear:



You can choose between "GERMAN", "ENGLISH" and "FRENCH".
To select a language you need to click on the circle in front of it.
In the example the selected language is "GERMAN".

5. Logout

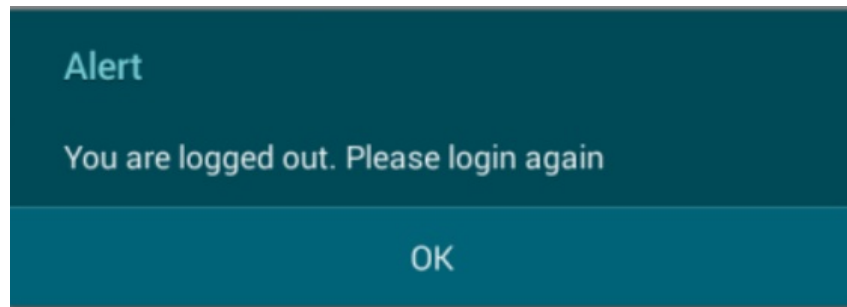
To close the app need to click on the "back" button.
Then the following confirmation dialog will be displayed.



After clicking "OK" you will be logged out.

Automatic Logout

If you are closing the app without logging out first, you will be automatically logged out from the server after a certain time. This is done as a security measure. When you reopen the app the message below will be displayed. You need to restart the app to login in again.



6. Contact and Support

You are interested in using the app?
Please contact us via the details below.

You need help?
In that case, you can also contact us using the following details:

Rösler SoftwareTechnik Entwicklungs- und Vertriebsgesellschaft mbH

Phone: +49 (0) 421 / 802270-0
E-Mail: info@minidat.de
www.minidat.de